

1000-series Entry Roller Guide FR/FRS

The 1000-series guide, version FR and FRS is the Morgårdshammar monoblock type of entry roller guides for precise guiding in roughing and intermediate mills. The FR/FRS guide replaces traditional static guide. The design ensures high surface quality on the rolled stock.

The design is compact, simple and heavy duty. The loss of barrel length is kept to a minimum. The operation is simple and reliable.

The 1000-series is available in several different sizes. All sizes can be supplied as FR or FRS version.

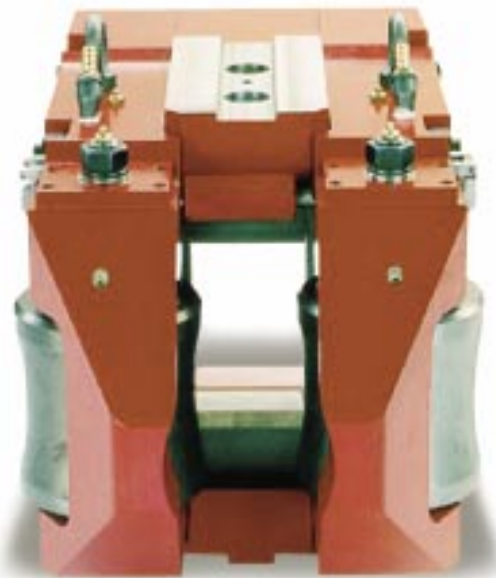
FR is equipped with independent roller centre distance regulation.

FRS is equipped with single point adjustment for roller centre distance regulation, which allows fast “on-line” regulation.

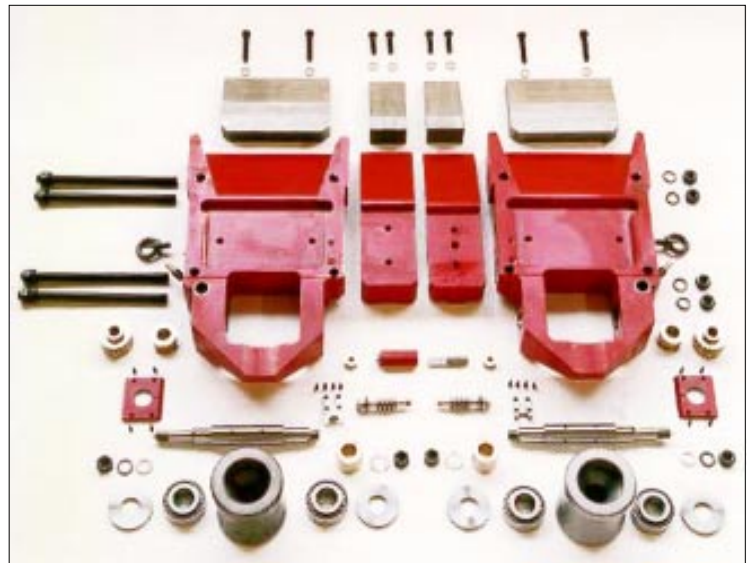
The guide comprises a pair of roller holders, held together by threaded rods. Distance pieces are mounted between the roller holders. The spacers are made to suit the section to be rolled. This means that one guide can cover a large number of sections by changing the distance spacers only.

Interchangeable wear plates are mounted on the inside of the roller holders and on the top and bottom spacer. The plates protect the inside of the guide itself from wearing.

The guide have the possibility to be connected to lubrication for bearings and cooling water for roller on top of the guide or integrated through its base.



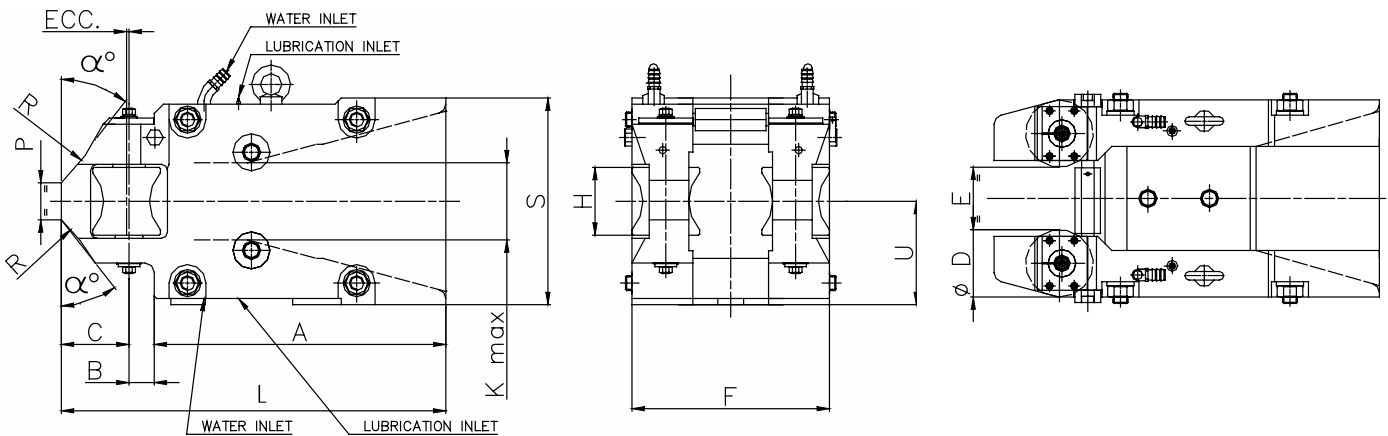
- Easy and fast wear part replacement
- Minimised and standardised components
- Minimised demand of spare parts and maintenance
- Rollers & bearings and bearing arrangement is common with other guide types within the 1000-series
- Suitable for both grease and air/oil lubrication systems



SIDE

FRONT

TOP



	FR 7	FRS 7	FR 9	FRS 9	FR 12	FRS12
A	445	474	445	445	510	445
B	45	41	52,5	75	65	75
C	110	100	140	140	180	180
D max	110	110	125	150	145	180
E	Variable	Variable	Variable	Variable	Variable	Variable
F	E+135	E+220	E+255	E+256	E+265	E+305
H	110	110	150	150	170	170
L	600	615	637,5	660	690	700
K	150	150	190	176	210	210
R	-	300	-	-	-	-
α°	45	-	45	45	45	45
S	335	335	375	375	410	410
U	167,5	167,5	187,5	187,5	205	205
P	60	60	70	90	70	72
ECC.	4	4	4	4	4	4

All dimensions are in mm

SHAPE, DIMENSIONS OF BAR TO BE GUIDED:

Stand	Fig.	W	H	S	T	R

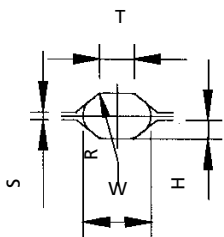


FIGURE A

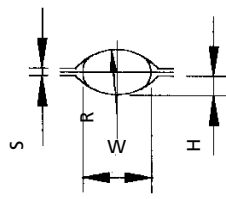


FIGURE B

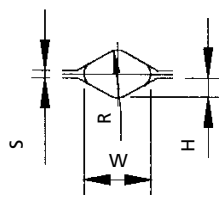


FIGURE C

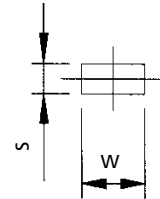
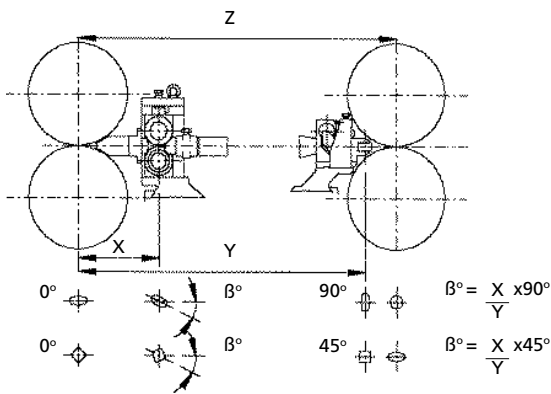


FIGURE D

STAND INFORMATION FOR TWIST GUIDE:



X = MH selection

Y = _____

Z = _____

Notes: _____

BRANCH OFFICES:

Morgardshammar AB
 Sales office Krefeld
 P.O. Box 101552
 DE-47715 KREFELD
 Germany
 Phone: +49 2151 81290
 Fax: +49 2151 611795
 E-mail: office@mh-guides.de

Danieli-Morgardshammar S.A.
 Avda. Zugazarte, 8
 ES-48930 LAS ARENAS-VIZCAYA
 Spain
 Phone: +34 94 480 4343
 Fax: +34 94 463 1183
 E-mail: danmhsa@danmhsa.es

Morgardshammar Inc.
 9800-L Southern Pine Blvd.
 CHARLOTTE N.C. 28273-5522
 USA
 Phone: +1 704 522 8024
 Fax: +1 704 522 0264
 E-mail: mhinc@mhincam.com



The Morgårdshammar plant in Smedjebacken, Sweden



Morgårdshammar

Morgårdshammar AB, SE-777 82 SMEDJEBACKEN, Sweden

Phone: +46 240 668500, Fax: +46 240 668501

E-mail: mh@morgardshammar.se

www.morgardshammar.se

 part of the **DANIELI** group